

THEY DON'T EAT THEIR

# Pollinators

White-topped  
pitcher plant  
*Sarracenia leucophylla*  
(Family: Sarraceniaceae)

Pollinator:  
Two-spotted bumble bee  
*Bombus bimaculatus*  
(Order: Hymenoptera)



Two-spotted bumble bee, *Bombus bimaculatus*

Cobra lily  
*Darlingtonia californica*  
(Family: Sarraceniaceae)

Pollinator:  
Mining bee, *Andrena nigrihirta*  
(Order: Hymenoptera)



Mining bee, *Andrena nigrihirta*

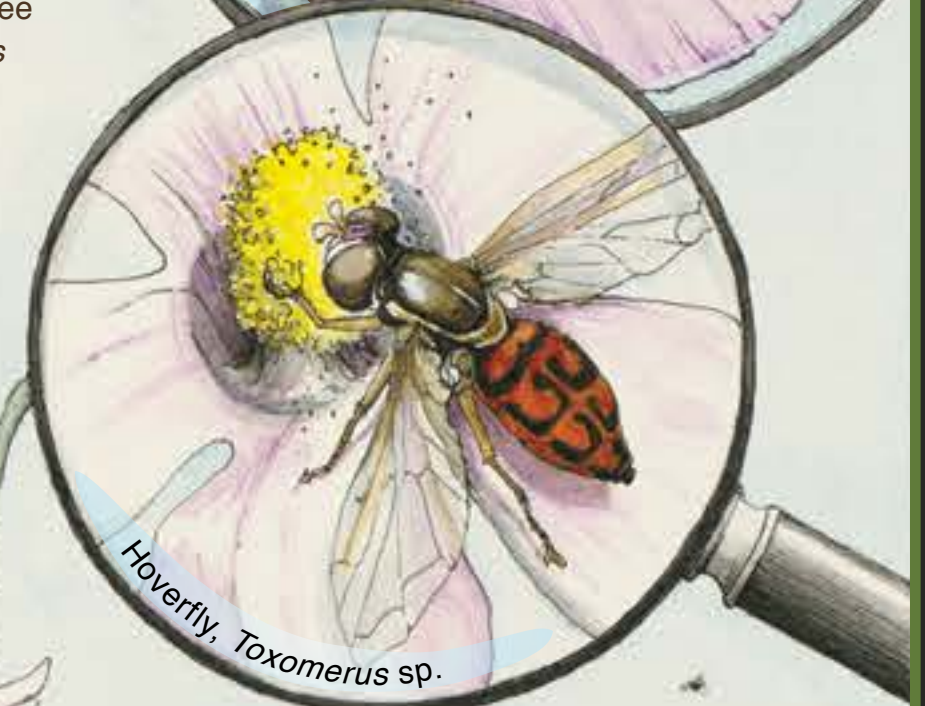
Venus flytrap  
*Dionaea muscipula*  
(Family: Droseraceae)

Tracy's sundew  
*Drosera tracyi*  
(Family: Droseraceae)

Pollinator:  
Metallic green sweat bee  
*Agapostemon sericeus*  
(Order: Hymenoptera)



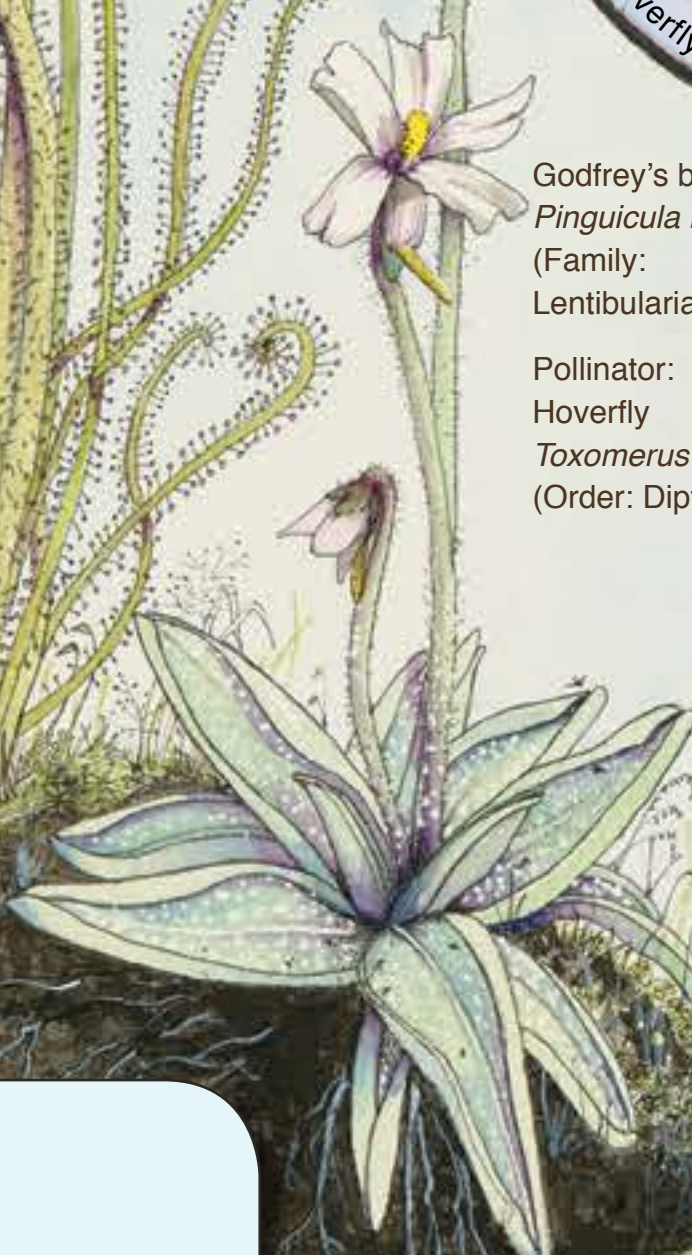
Sweat bee, *Agapostemon sericeus*



Hoverfly, *Toxomerus* sp.

Godfrey's butterwort  
*Pinguicula ionantha*  
(Family: Lentibulariaceae)

Pollinator:  
Hoverfly  
*Toxomerus* sp.  
(Order: Diptera)



Hoverfly, *Helophilus intentus*

Common bladderwort  
*Utricularia macrorhiza*  
(Family: Lentibulariaceae)

Pollinator:  
Hoverfly, *Helophilus intentus*  
(Order: Diptera)



## CARNIVOROUS PLANTS OF NORTH AMERICA AND THEIR POLLINATORS

Carnivorous plants are well-adapted to the environment of nutrient-poor soils by feeding on insects. But how do they attract both pollinator and prey? Learn more at our website [www.pollinator.org](http://www.pollinator.org)

Las plantas carnívoras se han adaptado a vivir en un ambiente con suelos pobres en nutrientes complementando su dieta con insectos. Pero ¿cómo hacen para atraer a los polinizadores y al mismo tiempo a sus presas? Conozca más en nuestro sitio [www.pollinator.org](http://www.pollinator.org)

Les plantes carnivores sont bien adaptées à un sol faible en nutriments grâce aux insectes dont elles se nourrissent. Mais comment attirent-elles à la fois les pollinisateurs et leurs proies? Pour en savoir plus, visitez notre site web [www.pollinator.org](http://www.pollinator.org)

For more information on plants and their pollinators, see [www.pollinator.org](http://www.pollinator.org)

ART AND DESIGN: TERI NYE

